

QUALITY CONTROL SYSTEM

QMS-9003



For industries

- ❑ **Paper & Carton**
- ❑ **Metal**
- ❑ **Wood**
- ❑ **Plastics**
- ❑ **Textile**
- ❑ **Glass**
- ❑ **Nonwoven Industries**
- ❑ **Construction Materials**

QUALITY CONTROL SYSTEM

QMS-9003

S.01

Screen Displays

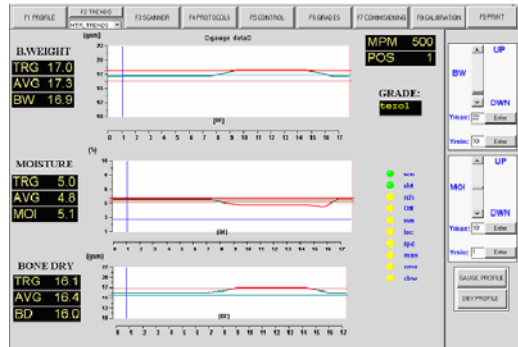
System Description

META QMS-9003 is a quality measurement & control system equipped with gauges for on-line measuring product quality data of sheet shaped materials as the are encountered in the aforementioned industries.

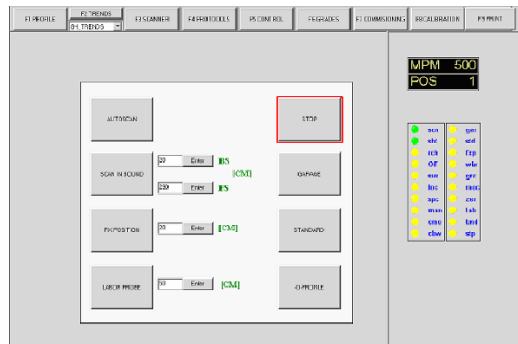
The system can be used to scan and measure very fast across the web, to measure at a certain fixed position or/and analyse disturbances coming from production line irregularities.

A QMS-9003 system consists of one or more measuring positions each of them comprising

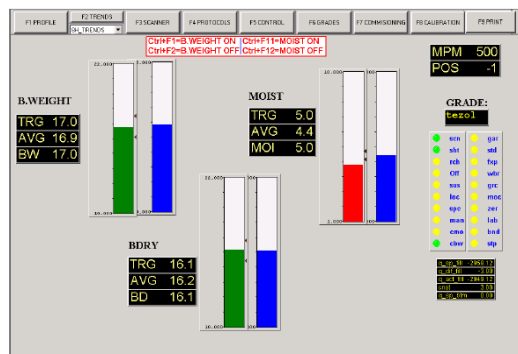
- a scanner with specified gauges
- local system cabinet for data processing and visualization
- additional equipment such as power supplies, air purging supply and cooling units etc.



Measuring Profiles



Scanners Operation

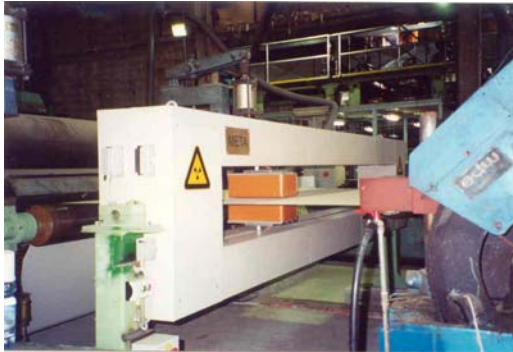


On-line Control

precision scanners

S.01

Depending on application or space requirements O-type, T-type- or C-type scanners can be provided.



O-type, paper application



T-type metal application

local system cabinet

Built in 19"-technology



O-type tissue application



Each scanner is remote operated by associated local cabinet but also a local control is provided through local operation box.

WxHxD :2000X600X600
protection IP54 (standard)
Conditions: up to 50 oC (without cooling)
communication with measuring positions through industrial network

sensors

S.01

sensors with different technologies
for various material characteristics
are provided :

